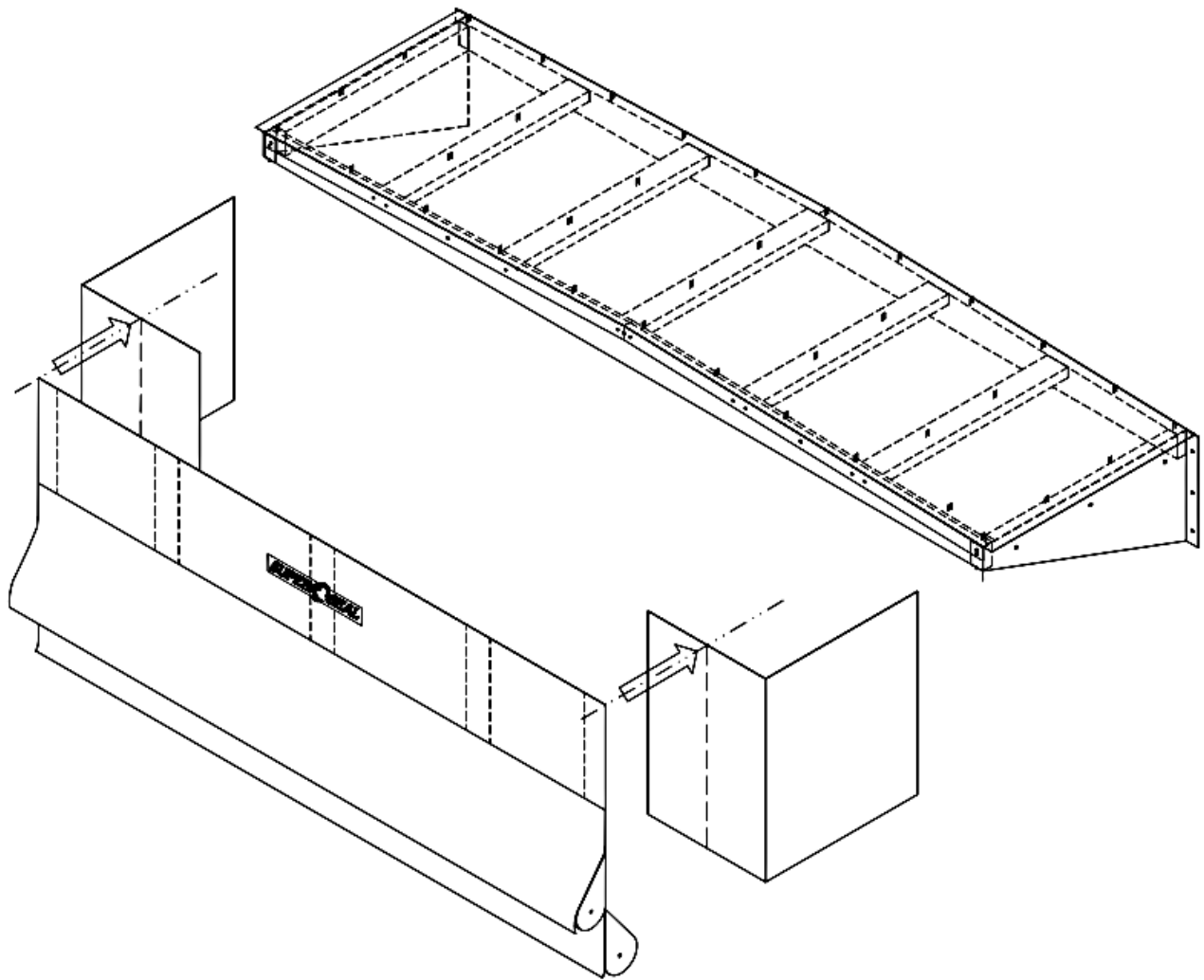


RD2 Rain Deflector

INSTALLATION INSTRUCTIONS

READ ALL INSTRUCTIONS BEFORE INSTALLING SEAL. SUPER SEAL MFG. LTD. WILL NOT BE HELD RESPONSIBLE FOR IMPROPER INSTALLATION OF ANCHORING DEVICES, OR FOR INSTALLATION INTO AGED OR UNSOUND CONCRETE, CONCRETE BLOCK, OR OTHER WALL OR FLOOR MATERIAL WHICH MAY RESULT IN



Components List

No.	Description	Qty.
1	Header Canopy C/W Angle Trim	1
2	Rain Deflector Curtain	1
3	Side Curtain	2
4	Canopy Support Strap	2
OR		
5	Side Support Arms (If Applicable)	2

Hardware Supplied List

No.	Description	Qty.
1	3/8"x1-7/8" Sleeve Anchor	6
2	3/8"x3" Sleeve Anchor	4
3	#14x1-1/2" Flat Quad Screws (Wood Frame) 1/4" x 1-1/2" Hex Head Tek Screws (Steel Frame)	20
4	3/8" Washer	20
5	1/4"x3/4" Hex Head Tek Screw-Zinc	10
6	1/4" B.S. Washer	10
7	1-1/2" Roofing Nails (Wood Frame) #10 x 3/4" -Pan Head Socket Tek Screws (Steel Frame)	6
8	Installation Instructions	1

If Canopy Support Straps Are used

No.	Description	Qty.
8a	3/8"x1-7/8" Sleeve Anchor	2
9a	#14x1-1/2" Flat Quad Screw (Wood Frame) 1/4" x 1-1/2" Hex Head Tek Screw (Steel Frame)	4
9c	3/8" B.S. Washer	4

OR

If Side Support Arms Are Used

No.	Description	Qty.
8b	5/16" (18) x 1-3/4" Hex Bolt	4
9b	3/8" B.S. Washer	4
10b	5/16" (18) Hex Nut	4
11b	5/16" Lock Washer	4
12b	3/8"x1-7/8" Sleeve Anchor	4

Recommended Tools List (Typical Masonry Wall)

No.	Description	Qty.
1	Tape Measure	1
2	Level	1
3	Pencil or Marker	1
4	Square	1
5	Power Drill	1
6	Caulking-Outdoor Acrylic Tape	1
7	Hammer Drill	1
8	Hammer	1
9	Robertson or Philips Driver	1
10	3/8" Masonry Drill Bit	1
11	Caulking Gun	1

1. CHECK ORDER

a. Measure door opening width.

- i. Seal door opening varies according to dimensions of existing door.
- ii. Make sure dimensions match Purchase Order.
- iii. Make sure there is enough space to install. Check for existing:
 - a. dock seals
 - b. bollard and obstacles
 - c. lights and conduit
 - d. drains
 - e.

b. Check *Components List* and *Hardware Supplied List* to make sure all listed are present (Page 2).

c. Check *Recommended Tools List* and make sure all are available (Page 2).

d. Determine method of mounting shelter to wall.

- *Super Seal* supplies 3/8" sleeve anchors with the shelter. **The customer must supply any other mounting hardware.**

Recommended methods for:

A. Concrete block, pre-cast concrete, or brick wall:

Use 3/8" sleeve anchors (supplied by Super Seal).

B. Metal siding: Use through-bolt fastening (supplied by others). Another alternative is to use wood lags with back plate from inside the building to back of seal.

NOTE: SUPER SEAL IS NOT RESPONSIBLE FOR INSTALLATION AND ANY DAMAGE OR INJURY CAUSED BY INSTALLATION OR THE PRODUCT. SAFE AND PROPER WORK PROCEDURES SHOULD BE FOLLOWED.

2. MARK CENTERLINE

- i. Locate centerline of door opening and mark on dock floor.
- ii. Mark centerline on lintel above door (Fig. 1).
- iii. Measure head frame width and mark.
- iv. Extend line 180" above finished grade.

3. MOUNTING HEAD FRAME

Prepare frame

- i. Determine front from back on head frame.
- ii. The front has an angle trim. Remove angle from front edge.

NOTE: DO NOT PUNCTURE OR SCRATCH SIDING. USE A MARKER TO MARK CENTER OF HEAD FRAME.

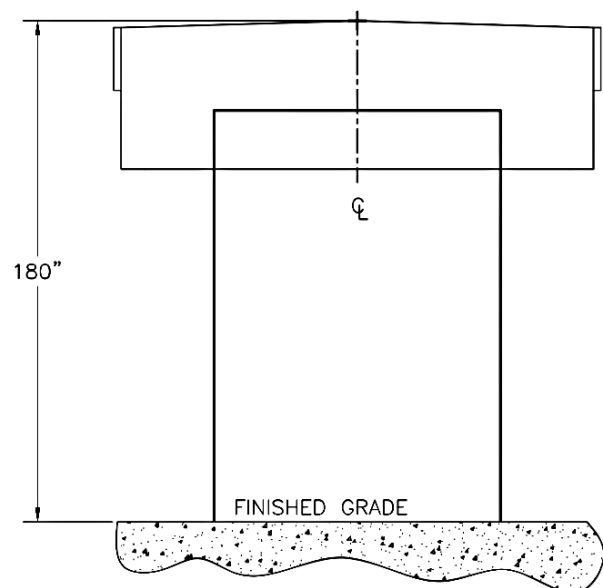


FIG. 1

b. Lift head frame above opening.

NOTE: USE, SAFE APPROPRIATE LIFTING METHOD.

- i. Place head frame on marks on wall (Fig. 2).
- ii. Position head frame flush to wall.
- iii. Insert 3" Sleeve Anchors through back of head frame back board.
- iv. Insert 1-7/8" Sleeve Anchors or other mounting hardware into holes on the Side Canopy Support.
- v. Tighten and secure.
- vi. Repeat for left and right support brackets.

NOTE: THIS SHELTER MUST BE PLUMB, LEVEL, AND SQUARE IN ORDER TO FUNCTION PROPERLY.

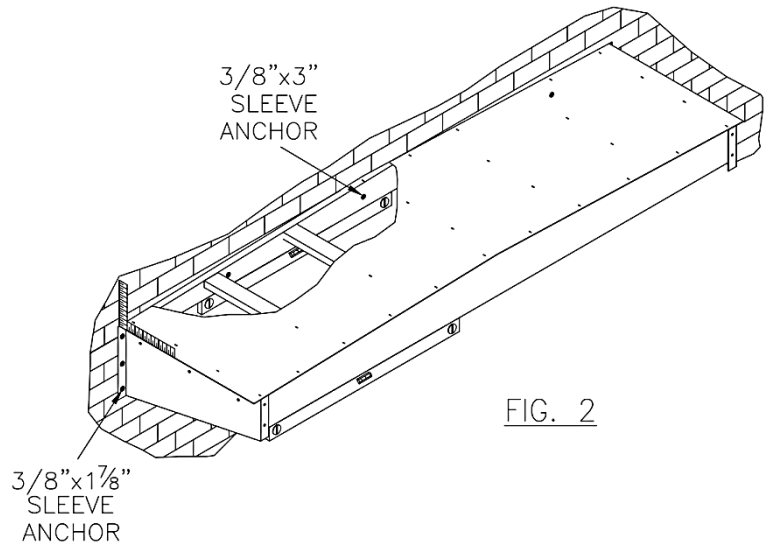


FIG. 2

4. ATTACH HEAD CURTAIN TO HEAD FRAME

a. Attach side curtains (Fig. 3).

Use TEK screws and attach side curtains flush to wall.

b. Position and secure header curtain.

- i. Logo is on front of header curtain.
- ii. Match top center of header curtain with top of center head frame (Fig. 4).
- iii. Place raw edge flush to frame edge.
- iv. Secure with roofing nails.
- v. Spread rest of header curtain along head frame.
- vi. Keep flush with edge, ensuring a tight fit.

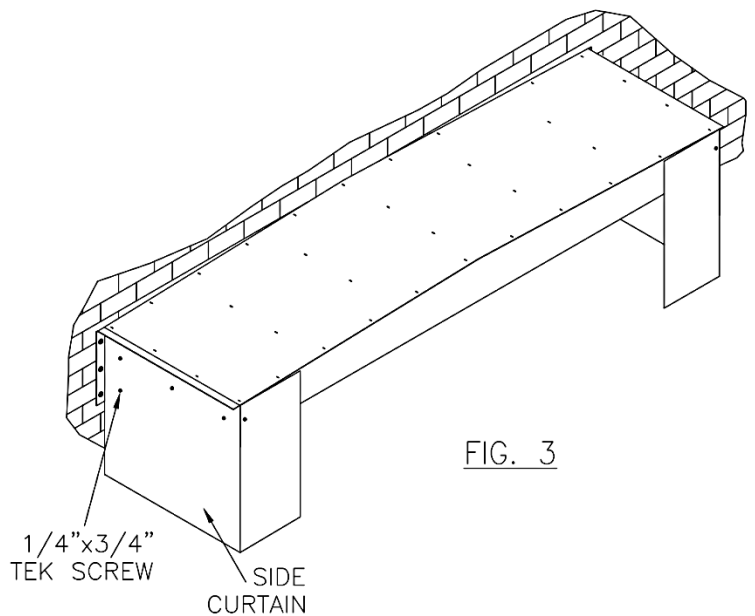


FIG. 3

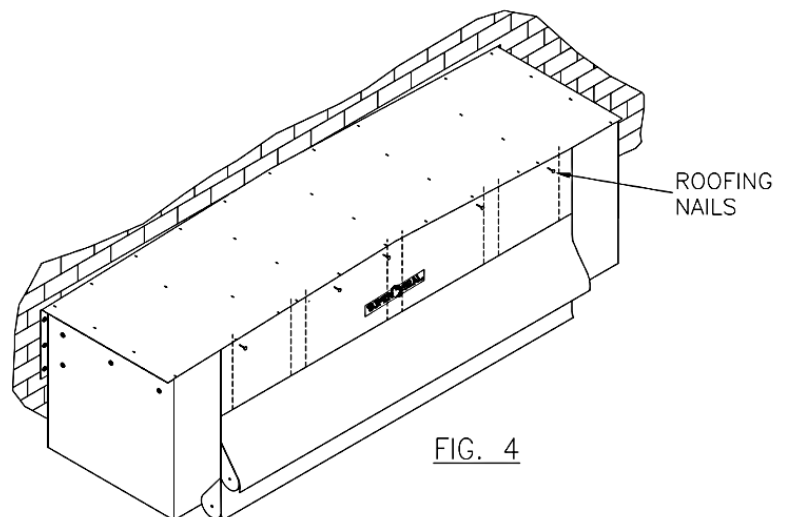


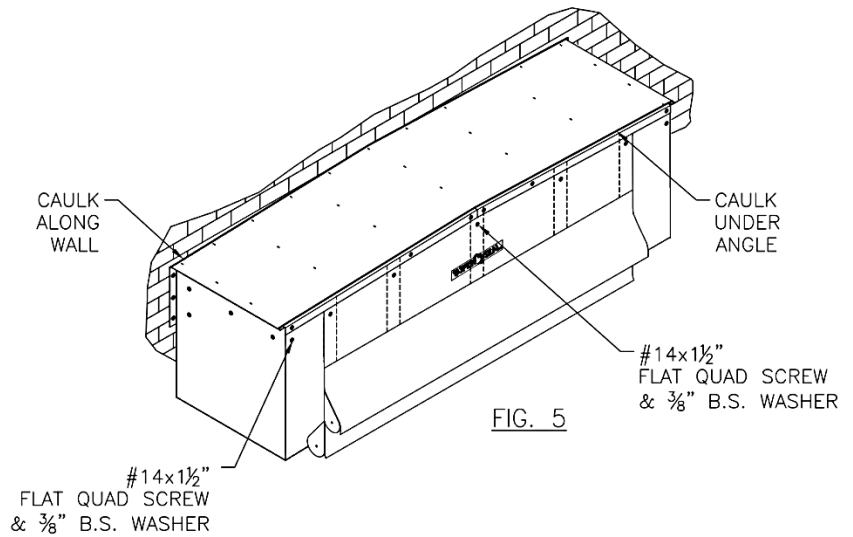
FIG. 4

c. Re-attach angle to front edge of head frame.

- Match holes in angle with head panel stays.
- Insert screws and 3/8" washer into holes (Fig. 5).
- Secure.

d. Attach head curtain to bottom frame member.

Insert screws and 3/8" washer through head curtain stays.



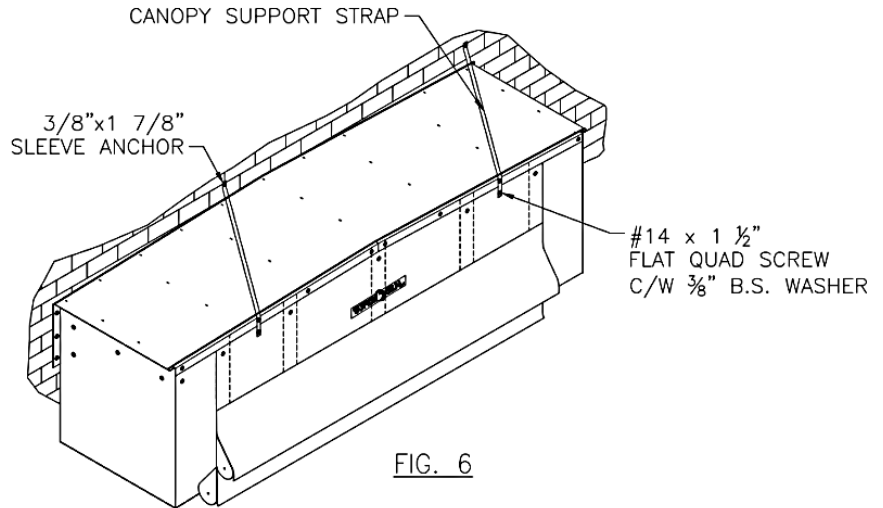
5. FINISHING INSTALLATION (Fig. 6)

a. Install canopy support straps.

- Screw support straps to front of canopy.
- Anchor straps to wall.

b. Caulk between head frame and wall.

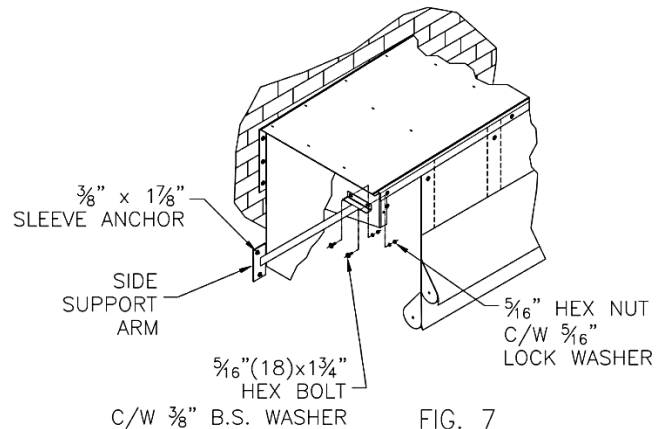
An outdoor acrylic type caulking is recommended.

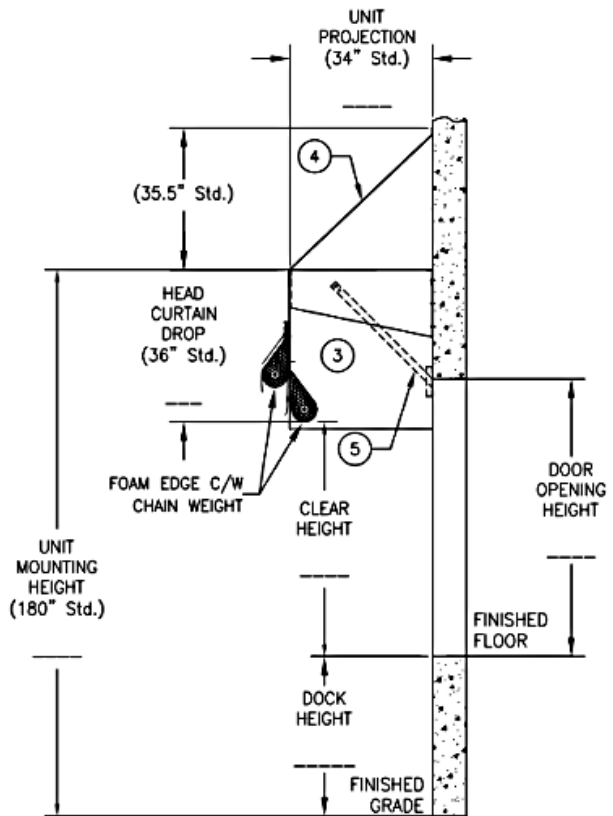
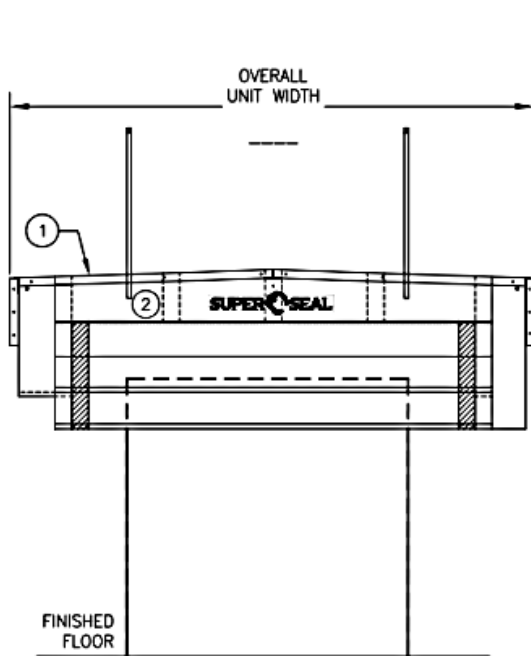


NOTE: IF MOUNTING ON SIDING OR ON PRE-CAST CONCRETE, FILL IN GAPS WITH POLYURETHANE FOAM.

- Caulk along:
- Cut side of head frame along wall.
- Head frame angle.
- Fill in any remaining gaps around unit as needed.

NOTE: IF SIDE SUPPORT ARMS ARE PROVIDED INSTEAD OF CANOPY SUPPORT STRAPS SEE FIG. 7.





LEGEND

1. WOOD FRAME WITH GALV'D STEEL COVER AND SIDE SUPPORTS
2. HEAD CURTAIN - WITH FULL WIDTH FLAPS & (QTY 2) CHAIN WEIGHTED FOAM PAD
3. SIDE COVER CURTAIN
4. CANOPY SUPPORT STRAPS
5. CANOPY SIDE SUPPORT BRACKET-LOWER REINFORCEMENT ARM (OPTION)